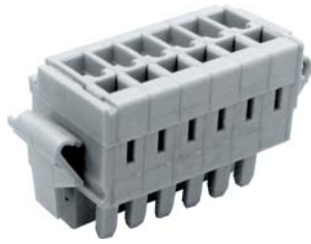
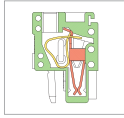


MC705 Pluggable PCB Connector, Plug



MC

| DIMENSIONS/POSITIONS | | MC705-350..D | MC705-381..D |
|----------------------|-----------------------|-----------------------------|-----------------------------|
| 間距 | Pitch | 3.50mm | 3.81mm |
| 位數 | Poles | 2 ~ 26Poles | 2 ~ 26Poles |
| 塑膠本體 | Housing Material | PA 66 | PA 66 |
| 彈片 | Spring | Stainless Strip Steel | Stainless Strip Steel |
| 導電夾片 | Contact | Phosphor Bronze, Tin Plated | Phosphor Bronze, Tin Plated |
| 電線線徑 | Wire Size | 14 ~ 28AWG | 14 ~ 28AWG |
| 剝線長度 | Wire Strip Length | 7mm ~ 8mm | 7mm ~ 8mm |
| 環境作業溫度 | Operating Temperature | -40°C to +105°C | -40°C to +105°C |

TECHNICAL DATA

| | | | |
|---|--------------------------------|--------------------|--------------------|
| 連接符合標準 Connection in acc. with standard EN-VDE | | | |
| 額定電流 I _n | Nominal Current I _n | 10A | 10A |
| 額定橫截面 | Nominal Cross Section | 1.5mm ² | 1.5mm ² |
| 最大負載電流 | Maximum load current | 10A | 10A |
| 絕緣材料 | Insulating Material | PA | PA |
| 阻燃等級,符合UL94 Inflammability class acc. to UL94 | | V0 | V0 |
| 額定電壓,UL/CUL Nominal voltage, UL/CUL | | 300V | 300V |
| 額定電流,UL/CUL Nominal current, UL/CUL | | 10A | 10A |

